

WINDOWS 11: THE JOURNEY

GUIDING YOUR
TRANSITION
WITH CONFIDENCE



Time saving tools



eduthing.co.uk



🔍 Windows 11: The Journey

WHAT'S HAPPENING TO WINDOWS 10?

END OF SUPPORT: 14 OCTOBER 2025

Microsoft has confirmed that Windows 10 will reach the end of support (EOS) on 14 October 2025.

AFTER THIS DATE, NON-COMPLIANT WINDOWS DEVICES WILL NO LONGER RECEIVE:

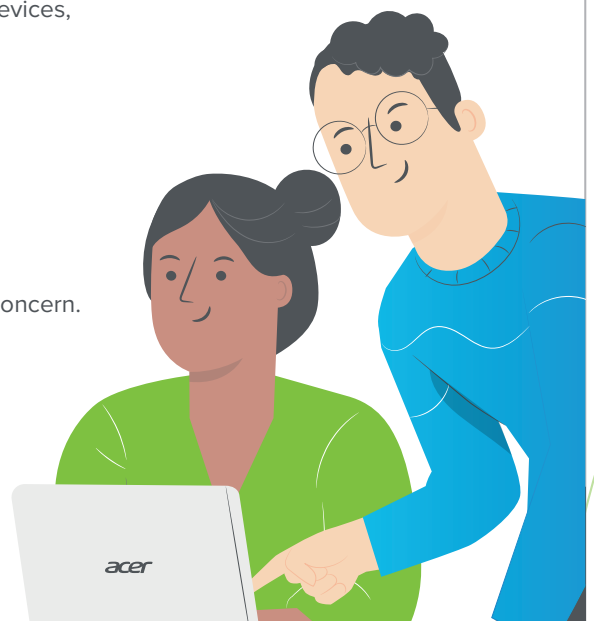
- + LIMITED SECURITY UPDATES OR PATCHES
- + BUG FIXES OR TECHNICAL SUPPORT
- + FEATURE UPDATES OR IMPROVEMENTS

This marks the official end of Microsoft's mainstream support for Windows 10 - and presents a serious challenge for UK schools still relying on it.

WHAT THIS MEANS FOR YOUR SCHOOL

For UK schools, especially those operating large fleets of Windows 10 devices, this deadline has major implications:

- + **CYBERSECURITY RISK**
Unsupported devices are more vulnerable to malware, ransomware, and other threats - with no protection from future exploits.
- + **DATA PROTECTION & COMPLIANCE**
Schools must comply with UK GDPR and DfE digital safeguarding requirements. Unsupported software poses a serious data security concern.
- + **LOSS OF FUNCTIONALITY OVER TIME**
Many teaching tools, MIS platforms, and education apps will stop receiving updates or may become incompatible.
- + **POTENTIAL FOR INCREASED SUPPORT COSTS**
IT teams will spend more time fixing issues on older, unsupported devices, which will increase costs and cause disruption.



Windows 11: The Journey

MOVING TO NEW WINDOWS 11 DEVICES

WHY UPGRADING IS THE BEST LONG-TERM STRATEGY FOR SCHOOLS

Windows 10's end-of-support date of October 2025 is Fast Approaching. Moving to modern Windows 11 devices isn't just a tech refresh; it's a strategic step forward. With built-in security, performance, and cloud readiness, Windows 11 Education empowers staff and students while reducing your IT burden.

WHAT DOES THIS MEAN FOR SCHOOLS?

Modern Windows 11 devices are designed for hybrid learning, seamless integration with Microsoft 365, and enhanced safeguarding. Upgrading also ensures:

BENEFITS OF WINDOWS 11

+ IMPROVED USER EXPERIENCE:

Faster performance, better battery life, and reduced downtime

+ OPTIMISED FOR CLOUD:

Easy management via Microsoft Intune or eduthing remote services

+ ENHANCED SECURITY:

Built on a modern security foundation, Windows 11 includes hardware-based isolation, encryption and malware prevention enabled by default, offering stronger protection for student data and privacy.

+ IMPROVED PERFORMANCE:

Faster processing speeds and smarter memory management help schools run digital learning tools more efficiently, improving overall device responsiveness and classroom productivity.

+ INNOVATIVE TOOLS

Windows 11 includes a range of built-in apps and features that support collaboration, creativity and communication, helping educators deliver more engaging lessons.

+ ENHANCED ACCESSIBILITY:

Improved tools such as colour filters, enhanced screen reader support and more accurate speech recognition ensure all learners, regardless of ability, can fully engage in the digital classroom.



🔍 Windows 11: The Journey

FUTURE COMPATIBILITY: ONGOING FEATURE UPDATES AND APP SUPPORT

These devices are built for education, with durability, scalability and full compatibility with the latest digital tools and teaching platforms.

HOW TO UPGRADE:

- + Audit your devices to identify which can be upgraded and which should be replaced
- + Choose the right device tier (Basic, Standard, or Advanced - depending on usage)
- + Decide on a purchase or finance model (buy outright, lease, or Device-as-a-Service)
- + Plan rollout timelines and schedule staff onboarding and support

eduthing offers tailored support and bundles with Acer Windows 11 Education devices, setup, and optional training - all delivered with flexible finance.



🔍 Windows 11: The Journey

YOUR OPTIONS

FLEXIBLE WAYS TO UPGRADE TO WINDOWS 11 DEVICES - WITHOUT THE STRESS

THE BIG QUESTION IS: HOW DO WE PAY FOR IT?

Whether you're replacing a few machines or upgrading your entire school fleet, eduthing offers flexible procurement options tailored to your budget, timeline, and strategic goals.

BUY OUTRIGHT

This is the traditional route - ideal for schools with capital funding available now.

BEST FOR:

- + Smaller schools with a single-phase upgrade plan
- + Use of ringfenced or end-of-year capital budgets
- + Wanting full ownership from day one

WHAT IT INCLUDES:

- + Windows 11 Education-ready devices
- + Deployment and configuration services
- + Optional CPD and user training
- + Support add-ons available



LEASE WITH SMART FINANCE

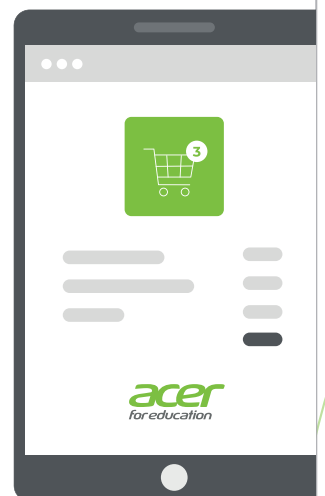
When you can't fund a full device refresh upfront, Smart Finance, powered by BNP Paribas, gives you a smarter way to access the tech you need in a shorter timeframe.

BEST FOR:

- + Schools with limited or delayed capital budgets
- + Multi-year refresh strategies
- + Larger or phased rollouts

WHAT'S INCLUDED:

- + Windows 11 Education-ready devices
- + Deployment and configuration services
- + Support for integrating setup and training costs into the lease agreement
- + Options at lease end, including device return, lease extension, or purchase at fair market value





BENEFITS OF LEASING



If you have limited capital to spend, that needn't be a restriction because you can decide your deposit amount and the monthly, quarterly or annual repayments that suit your cash flow. This means your budget can achieve more. And your capital reserve? That can be freed up to use elsewhere.

By opening the door to the latest equipment, leasing can help your institution drive improved teaching and learning outcomes through technology. We're proud to support the education sector in the UK in partnership with BNP Paribas Leasing Solutions Ltd.

+ GET THE ASSETS YOU NEED - WITHOUT COMPROMISE:



When spending cash, you may find yourself compromising on the solution because of restricted budgets. Leasing lets you invest in what your education institution really needs and boosts the purchasing power of your annual budget.

+ PROTECT AND REINVEST VITAL CASH RESERVES:



Leasing is the most sensible way to fund investments that don't generate any direct revenue, like your laptops, desktops, monitors, projectors, Chromebooks, and more from Acer. Your cash reserves can then be spent on strategic activity or projects elsewhere to enhance teaching and learning.

+ ENJOY MANAGEABLE REPAYMENTS:



You will have regular, predictable and therefore manageable payments for the lifetime of the contract.

+ PAY A FLAT FEE FOR EVERYTHING:



Our leasing solutions can cover the cost of the assets plus any initial implementation and consultation fees - all within the same regular repayment. Noting a maximum of 20% soft costs can be included in a finance agreement.

+ FLEXIBLE END OF TERM OPTIONS:



Either return the devices, extend the lease or purchase the devices at Fair Market Value.

🔍 Windows 11: Acer Devices

WINDOWS 11 COMPATIBLE DEVICES

LAPTOPS



ACER TRAVELMATE P2 TMP215-55-TCO

- + Windows 11 Pro Education
- + 15.6" FHD IPS SlimBezel
- + Intel Core i5 120U
- + 16 GB RAM + 512GB PCIe NVMe SSD + 1 year warranty

£541.94

ex VAT



ACER TRAVELMATE SPIN B3 TMB312RN-31

- + Windows 11 Pro Education
- + 12.2" WUXGA IPS LCD Touch
- + Intel N250 / N250 / up to 3.8 GHz
- + 8 GB RAM + 256GB PCIe NVMe SSD
- + Wi-Fi 6E + Shale Black + 1 year warranty

£376.99

ex VAT

DESKTOP



ACER VERITON VVN4720GT

- + Windows 11 Pro (National Academic)
- + Intel Core i5-14400T + 16GB DDR5 SDRAM
- + 512GB PCIe SSD + Wi-Fi 6
- + Keyboard & Mouse + VESA Mount
- + 3 year collect & return warranty

£449

ex VAT

MONITOR



ACER VERO B247YG

- + B7 Series + LED monitor
- + Full HD (1080p) + Zero Frame
- + IPS 120Hz 4ms + 23.8"
- + USB-Hub + AdaptiveSync Computer Monitor
- + Adjustable height, swivel, and tilt positions for ergonomic comfort

£115

ex VAT

CONTACT YOUR RELATIONSHIP MANAGER



LAUREN ADAMS
RELATIONSHIP TEAM MANAGER
+ ladams@eduthing.co.uk



PAULO CAMACHO
RELATIONSHIP MANAGER
+ pcamacho@eduthing.co.uk



HUGO MARQUES
RELATIONSHIP MANAGER
+ hmarques@eduthing.co.uk



PAUL KNOX
RELATIONSHIP MANAGER
+ pknox@eduthing.co.uk



HAYDEN CRIPPS
BUSINESS DEVELOPMENT MANAGER
+ hcripps@eduthing.co.uk



MARK WREAKES
RELATIONSHIP MANAGER
+ mwreakes@eduthing.co.uk

BOOK A MEETING

Book a meeting to discuss your school's move to Windows 11.

EMAIL: windows11@eduthing.co.uk

